



Total Solution Provider in Saw Device

SA434AK

Remote Control, RF SAW Filter
Revision 0: September 2005



- Electrical Characteristics
 - Package Dimensions
 - Testing Environment
 - Frequency Characteristics
-

SAWNICS Inc.

460 Cheonheung-ri, Seonggeo-eup, Cheonan-si, Chungcheongnam-do, 330-836 / Korea.
Tel: +82 41 550 9372 / Fax: +82 41 550 9399 / www.sawnics.com

□ Electrical Characteristics

Maximum Ratings

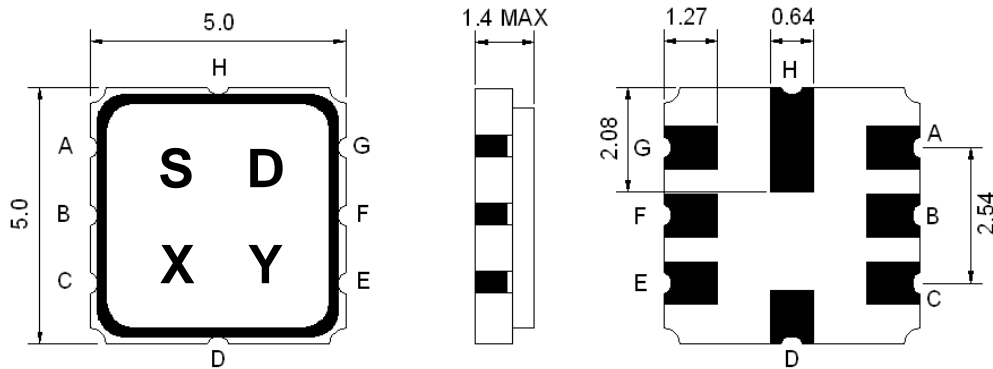
Parameters Description	Unit	Minimum	Typical	Maximum
Operating Temperature Range	°C	-40	-	+85
Storage Temperature Range	°C	-	-	-
Maximum DC Voltage	V	-	-	0
Maximum Input Power	dBm	-	-	10
Source Impedance (single ended) ⁽¹⁾	Ω	-	50	-
Load Impedance (single ended) ⁽¹⁾	Ω	-	50	-
Package type & size	K			
Length x Width	mm ²	-	5.0 x 5.0	-
Height	mm	-	-	1.5

Electrical Specification

Parameters Description	Unit	Minimum	Typical	Maximum
Center Frequency (Fo)	MHz	-	434.46	-
Insertion Loss within 434.30 ~ 434.62 MHz	dB	-	2.5	4.0
Pass Band Ripple within 434.24 ~ 434.68 MHz	dB	-	1.0	3.0
Pass Band Ripple within 434.18 ~ 434.74 MHz	-	-	1.5	6.0
Attenuation				
10.0 ~ 414.5 MHz	dB	45	56	-
414.5 ~ 428.5 MHz	dB	30	36	-
428.5 ~ 433.42 MHz	dB	15	23	-
435.42 ~ 432.5 MHz	dB	10	15	-
442.5 ~ 550.0 MHz	dB	30	38	-
550.0 ~ 1000.0 MHz	dB	45	55	-

Notes : (1) With Matching Network .

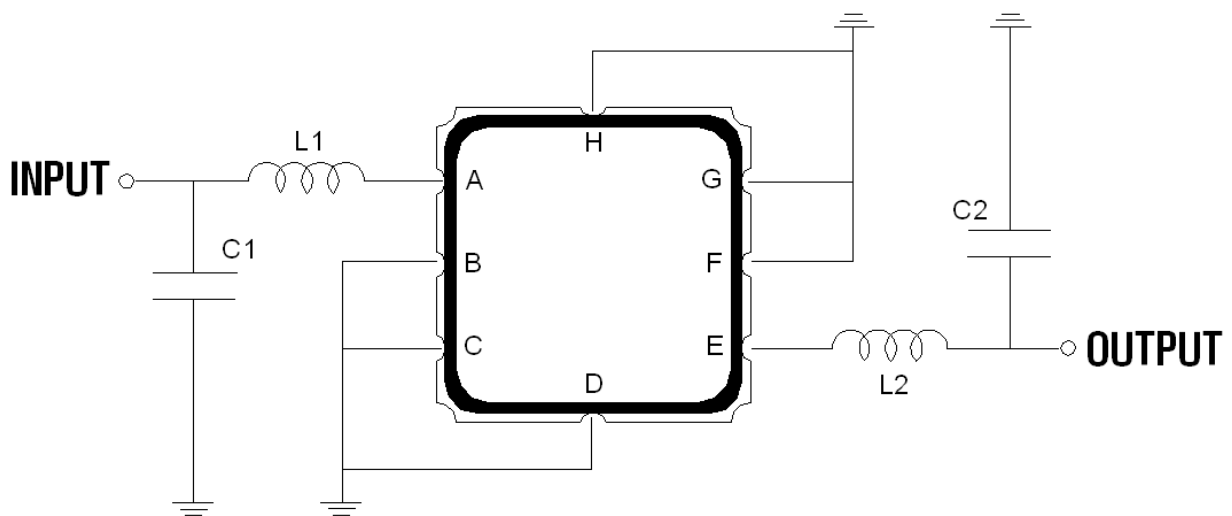
Package Dimensions



Marking Descriptions	
S	TCRF Application
D	Series Number
X	Date Code(Year)
Y	Date Code(Month)

Pin Description	
B, C, D, F, G, H	Ground
A	In
E	Out

Testing Environment



L1=33nH , L2=33nH

C1=6 pF , C2=7pF

□ Frequency Characteristics

Frequency Response

